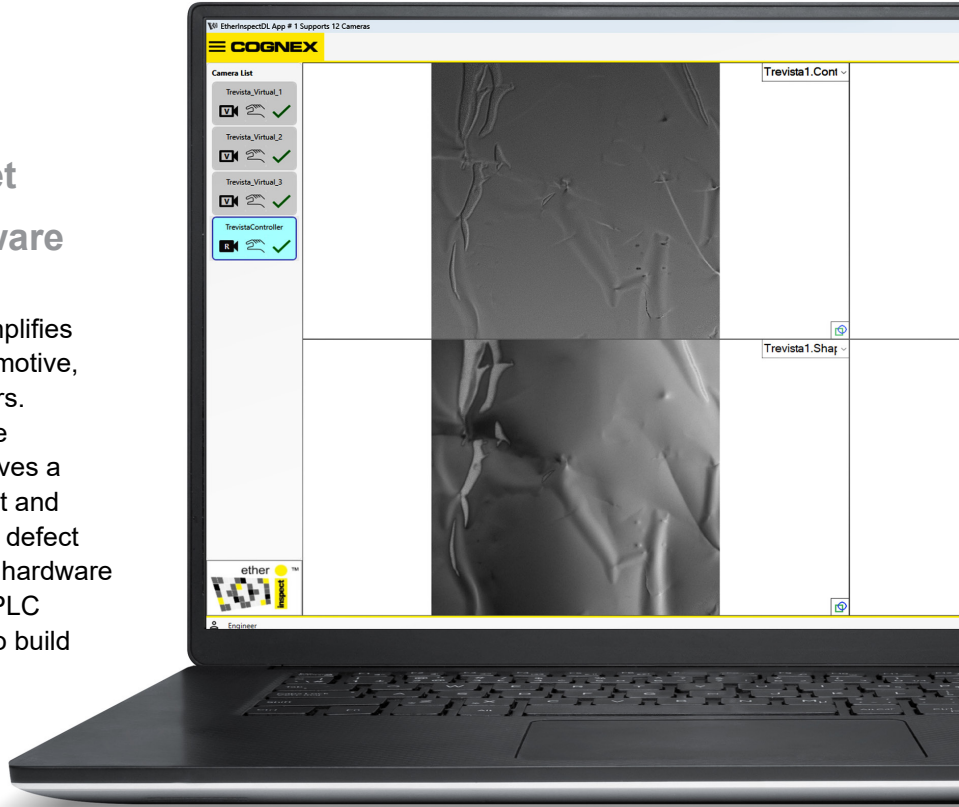


ETHERINSPECT

Accelerate your time to market
with user-friendly vision software

EtherInspect is a PC-based software that simplifies complex machine vision inspections for automotive, electric vehicle, and electronics manufacturers. Embedded with powerful vision tools from the VisionPro® library, the integrated platform solves a range of applications, including measurement and gauging, robotic guidance, identification, and defect detection. Compatible with various cameras, hardware accessories, communication protocols, and PLC interfaces, EtherInspect offers the flexibility to build a customizable solution, while optimizing application performance.



Key Features:

- Rule-based, edge learning, and deep learning tools
- Built-in PLC communications
- Supports a range of third-party devices and accessories
- Minimal coding for entry-level users
- Scripting and tool blocks for experienced users
- Support for up to 12 physical cameras with 64 total connections

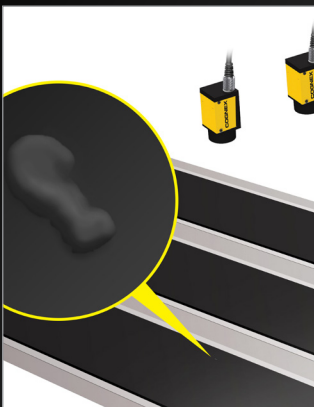
About VisionPro

EtherInspect is powered by VisionPro, an industry-leading vision software. VisionPro offers advanced programming and tool prototyping for specialized applications and can be built into custom software applications.

cognex.com/visionpro

Application Examples:

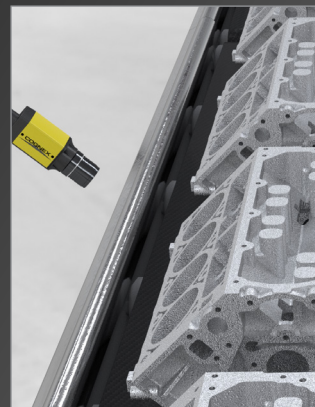
Electrode coating inspection



EV battery cell inspection



Cylinder inspection



Wheel inspection

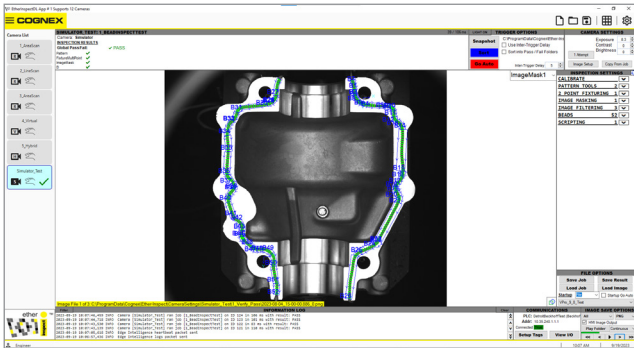


Reduce development complexity

EtherInspect shortens time to market by offering templates that simplify job setup and virtual and hybrid camera connections that enable fast system integration.

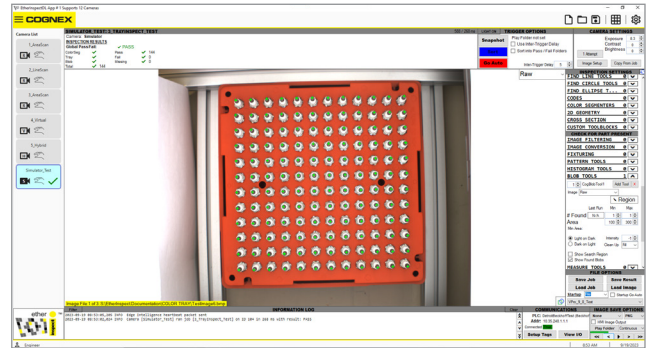
Templates

Pre-selected tool sets facilitate quick deployment and allow users to easily scale common applications, reducing development time.



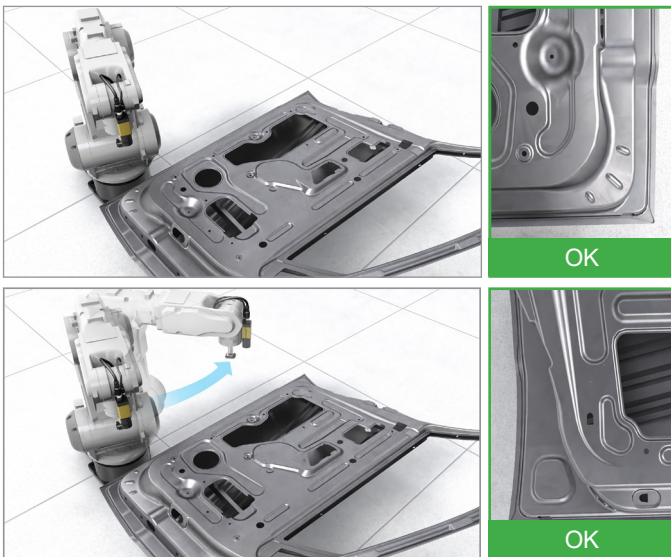
2D Bead Inspect Template

Template for finding width and location



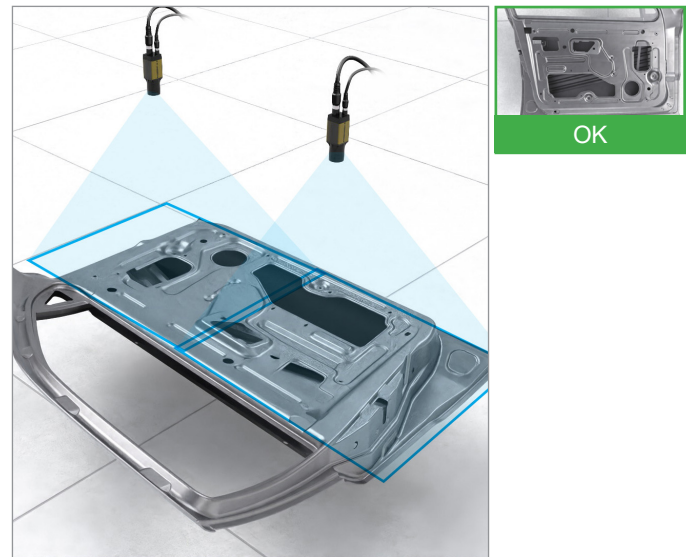
Part Array Template

Template for counting and inspecting a group of parts



Virtual cameras

Virtual camera technology allows multiple software connections to the same camera, enabling users to run concurrent inspections with a single device. A common use for this technology is in multi-point inspections, where a robot positions the camera around an assembly to be inspected and EtherInspect executes the inspection. With this setup, operators can monitor all inspections on one screen.

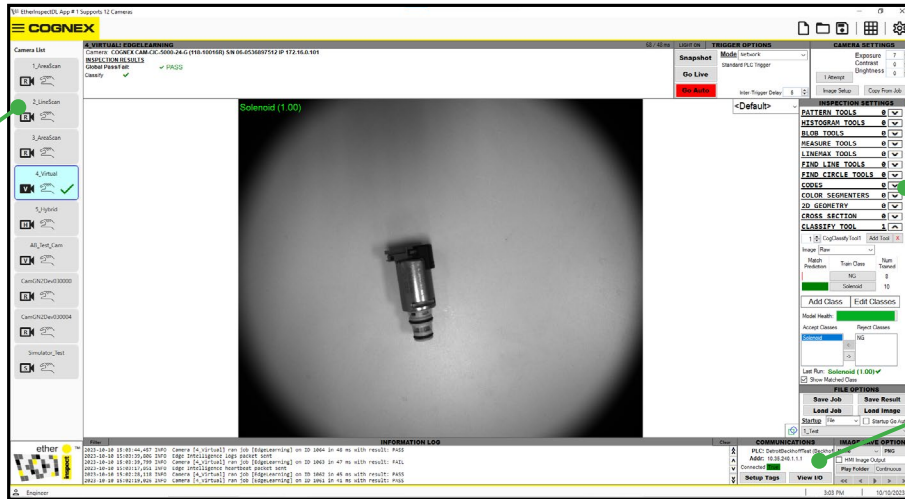


Hybrid cameras

Hybrid camera technology calibrates multiple cameras to produce one image. A common use for this technology is inspecting large parts where the field of view and resolution required exceeds the limits of a single camera. By using multiple cameras, a single high-resolution image is obtained. EtherInspect can locate features and take measurements across the stitched image.

Streamline integration

EtherInspect is camera-agnostic and supports a variety of third-party hardware and vision accessories to facilitate easy integration. With the ability to host up to 64 camera connections, the software allows one device to run several functions at the same time.



Easily connect and monitor cameras
Support for: GiGE, Basler, Camera Link, Teledyne Dalsa, and more

Quickly create jobs by dragging and dropping tools

Built-in PLC communications
Support for: Siemens, Beckhoff, Allen-Bradley, Modbus, and more

Flexible development options

EtherInspect offers (4) levels of application development to accommodate users of all skill sets.

<p>Beginner</p> <p>No coding required</p> <p>Ideal for simple applications and quick changes</p>	<p>Intermediate</p> <p>No coding required</p> <p>Provides more control over vision tools</p>	<p>Advanced</p> <p>C# script editor</p> <p>Used for advanced analysis</p>	<p>Expert</p> <p>Custom tool block editor</p> <p>Enables full control and customization</p>
---	---	--	--

COGNEX

Companies around the world rely on Cognex vision and barcode reading solutions to optimize quality, drive down costs, and control traceability.

Corporate Headquarters
One Vision Drive
Natick, MA 01760 USA

Contact us or find your regional sales office:
www.cognex.com/sales

Americas
North America +1 855 426 4639
Brazil +1 855 426 4639
Mexico +52 552 789 5444

Europe
Austria +49 721 958 8052
Belgium (FR) +33 176 549 318
France +33 176 549 318
Germany +49 721 958 8052
Ireland +353 21 601 9005
Italy +39 02 9475 4345
Spain +34 93 220 6237
Switzerland (DE) +49 721 958 8052
Switzerland (FR) +33 176 549 318
United Kingdom +353 21 601 9005
Other Europe +353 21 601 9005

Asia-Pacific
China +86 218 036 5424
India +91 7305 040397
Japan +81 345 790 266
Korea +82 704 784 4038
Singapore +65 3158 2511
Taiwan +886 801 492 017
Other Asia-Pacific +65 3158 2511

© Copyright 2025, Cognex Corporation.
All information in this document is subject to change without notice. Cognex and VisionPro are registered trademarks of Cognex Corporation. All other trademarks are the property of their respective owners.

Lit. No. EtherInspectDS-02-2025-EN

www.cognex.com